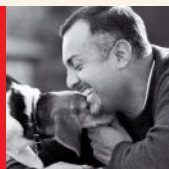


# DONATION FORM



Name: \_\_\_\_\_

Address: \_\_\_\_\_

Suburb: \_\_\_\_\_

State: \_\_\_\_\_ Postcode: \_\_\_\_\_

Email: \_\_\_\_\_

Phone: [H/W] \_\_\_\_\_

Mobile: \_\_\_\_\_

## Payment options (Please tick)

I have enclosed a cheque or money order

I would like to use my Credit Card

Visa  MasterCard  Bankcard

Card No: \_\_\_\_\_

Expiry date: \_\_\_\_\_

Cardholders Name: \_\_\_\_\_

Signature: \_\_\_\_\_

I / We request Delta Society Australia Limited to deduct a payment of \$20/\$50/\$100/\$200 or \$ \_\_\_\_\_ (other amount) from my credit card. All donations over \$2 are tax deductible. You will receive a receipt for your donation.

## Please send to Delta Society Limited

Suite 401, 64 Castlereagh Street,  
Sydney NSW 2000

Ph: (02) 9231 3218 Fax: (02) 9223 2382

E-mail: [deltasoc@hotmail.net.au](mailto:deltasoc@hotmail.net.au)

[www.deltasocietyaustralia.com.au](http://www.deltasocietyaustralia.com.au)

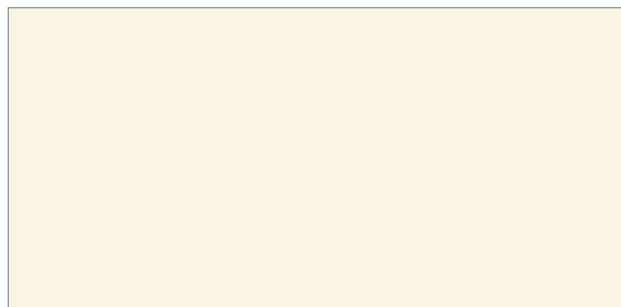


## It's positively therapeutic.

You can see it in their faces. The joy – and therapeutic benefit – experienced by sick children, the frail aged and disabled patients and residents in hospitals, nursing homes, rehabilitation centres and other institutions when Delta Purina Pet Partner teams visit them.

You'll find Delta dogs wherever animal assisted interventions can enhance a treatment or comfort a patient.

Your local Delta branch can be contacted at:



### Delta Society Australia Ltd

Suite 401, 64 Castlereagh Street  
Sydney NSW 2000

Ph: (02) 9231 3218

Fax: (02) 9223 2382

### Nestlé Purina PetCare

123 Epping Road  
North Ryde NSW 2113

Ph: (02) 8870 3800

Fax: (02) 8870 3801



# THE DELTA PURINA PET PARTNERS PROGRAM



# The Delta PURINA Pet Partners Program.

# Helping animals, helping people.

## How the program works

Volunteers who wish to join the program are invited to an induction session at which their dogs are assessed for temperament and suitability.



If successful, they undertake a one-day training seminar where the topics covered include ethics and confidentiality, the conduct of a visit and how to avoid stress in their dogs. We also address the stress of working in some residential care environments, which is balanced by the satisfaction and sense of achievement that volunteers get from their visits.

On successful completion of this program, volunteers are issued with Delta accreditation, including photo ID for the volunteer and the dog, and a uniform. They are then placed in a facility in their area.

The protocols for quality assurance we've developed make the Delta PURINA Pet Partners program the leader in the field of Animal Assisted Activities and Therapy in Australia.



Delta Society Australia's mission is to promote and facilitate positive interaction between people and companion animals. It pursues this mission through three core projects:

- The Certificate IV Course in Pet Dog Training and Canine Good Citizen™ dog training programs conducted by Delta graduates (Good Citizens on Both Ends of the Leash);
- The Delta Dog Safe Program, a school education program for junior primary school children about safe and sensible behaviour around dogs; and
- The Delta Purina Pet Partners Program.

The Society is a national non-profit organisation and is a registered charity in New South Wales, Queensland, Victoria, South Australia and Tasmania. All donations over \$2.00 are tax deductible.

## Animal assisted interventions – Pet assisted therapy

Pet Partners visit facilities as diverse as children's hospitals and wards, acute psychiatric and adolescent mental health units, physical rehabilitation units, hospices, adult day care, children with special needs and, of course, nursing homes, our largest client group.

Delta's National Coordinator of Policy and Programs works with health professionals to promote best practice in one-on-one goal oriented therapy. Rehabilitation specialists, psychologists, physiotherapists and occupational therapists increasingly incorporate Delta dogs into treatment programs for individual patients.

Delta has also developed education packages in animal assisted interventions for undergraduates and health professionals.

## How you can help

The Delta Pet Partners program receives no government funding. The generosity of our major sponsor, Nestlé Purina Petcare, makes it possible to pay the salaries of the three people who are employed on a part-time basis to administer the program. However, individual donations and local fundraising comprise more than 70% of our program income and 100% of these donations go directly to train and support our Pet Partner teams and those marvellous voluntary program coordinators who make it all possible.